

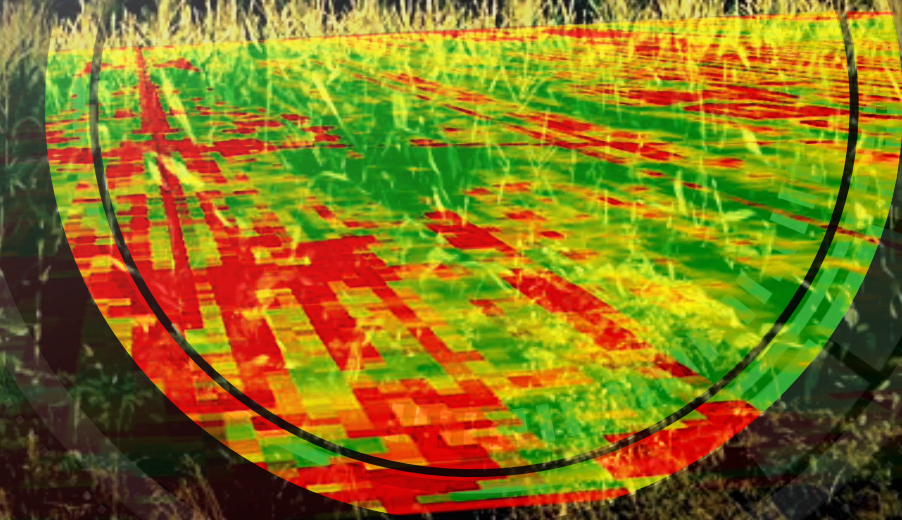
# AGRICOLLUS<sup>®</sup>

## OBSERVA

### CROP MONITORING



CROP  
SCOUTING



SATELLITE  
MONITORING

#### ADVANTAGES



Vigor indices to assess  
crops development and  
health



Water stress indices to  
identify areas with water  
requirement



Chlorophyll indices to  
identify problematic  
areas with chlorosis



Geolocated data  
collection with mobile  
App to optimize field  
activities





## FIELD MAPPING

Geolocate the field on the map and draw it. Features will be immediately hooked. You can enable the cadastral map and enter sheet and parcel information.

Use one of the following methods to create your field.



### Draw on map

Locate the plot on the map and draw it manually.

✓ Select



### Automatic detection

Locate the plot on the map and enable automatic detection to map the field with just one click.

✓ Select



### Upload files

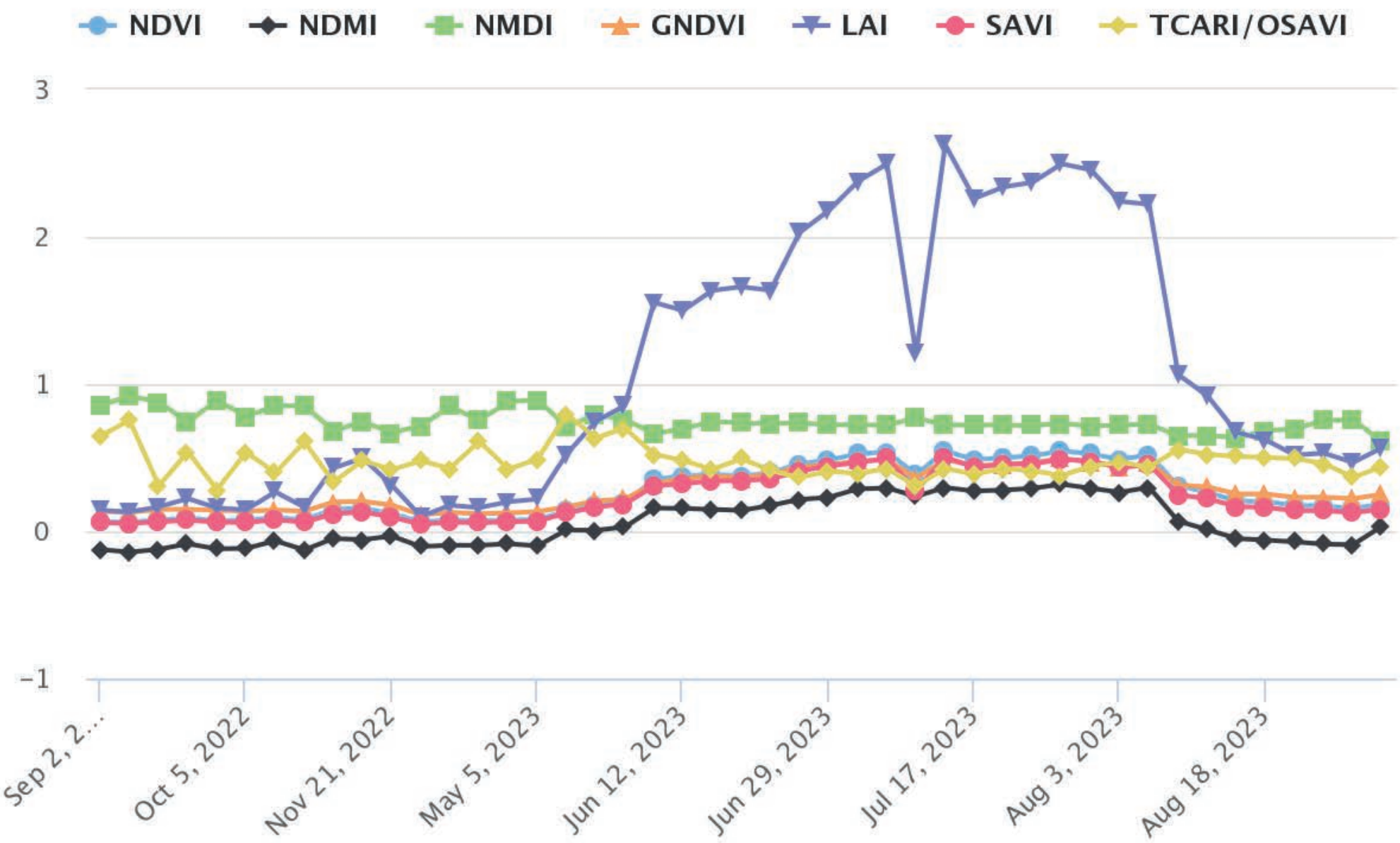
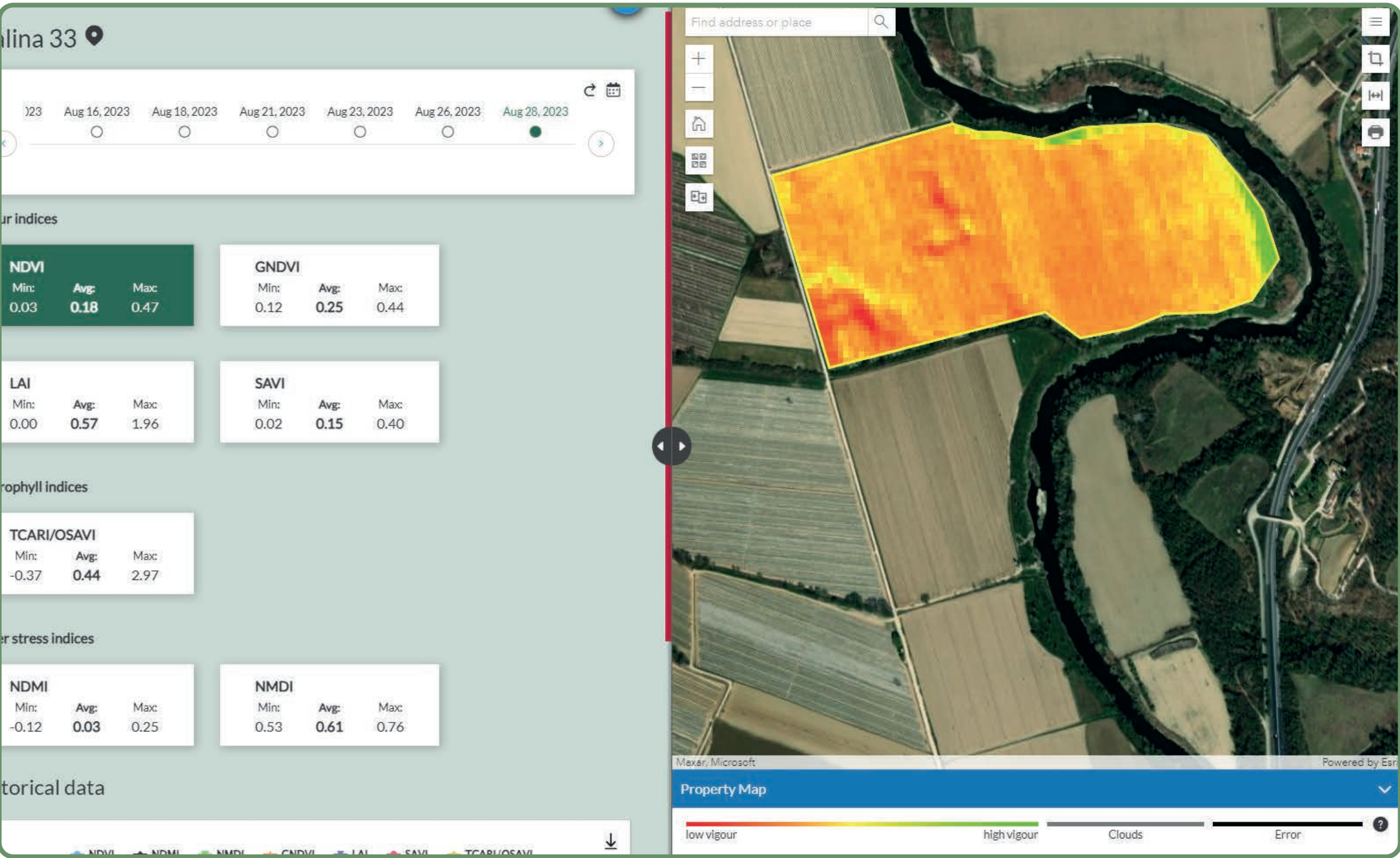
Upload a .shp or .kmz file.

✓ Select



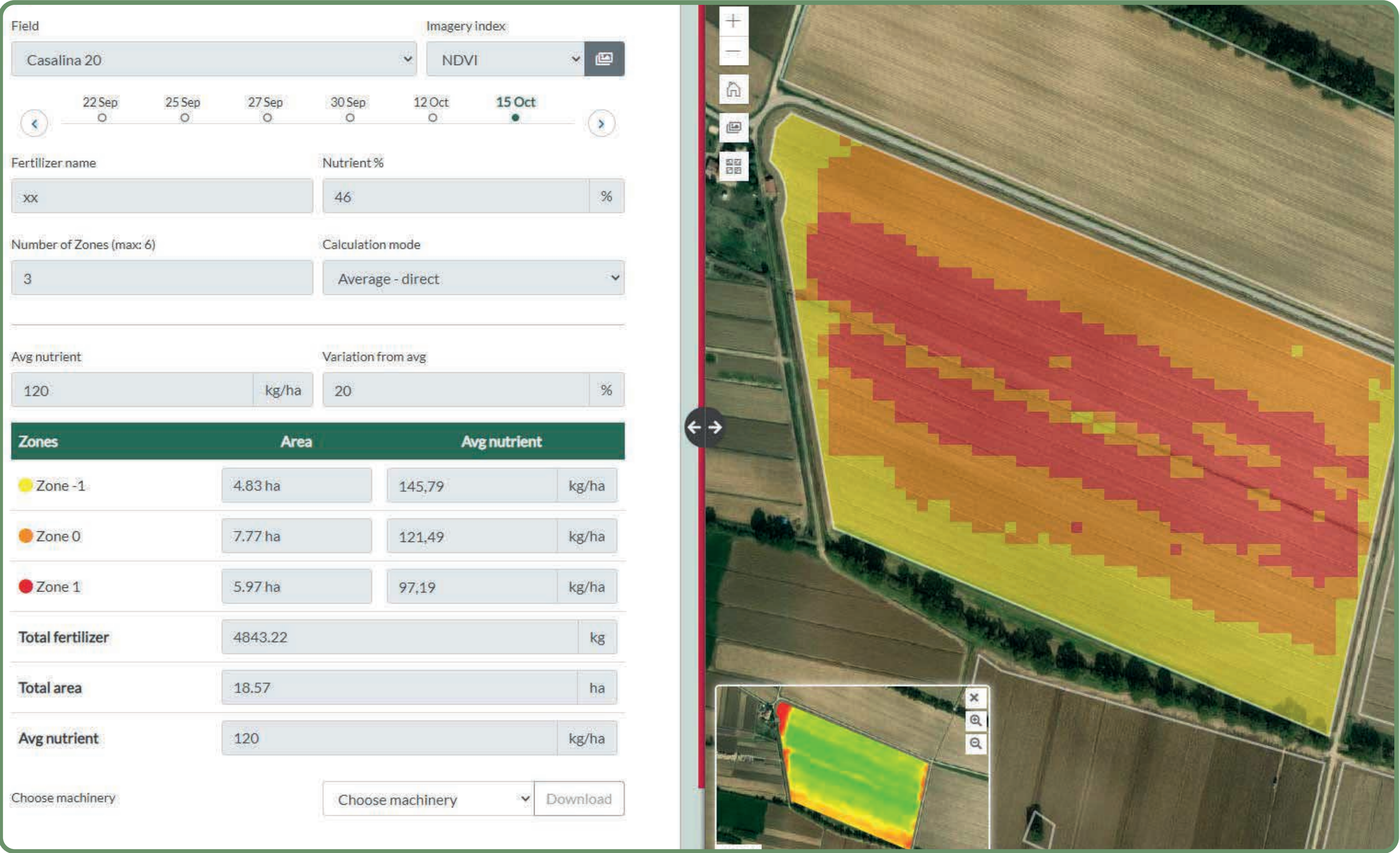
SATELLITE IMAGERY

Consult Sentinel-2 satellite images of the field with vigor, water stress and chlorophyll indices, provided every 5 days at a spatial resolution of 10 meters.





# FEATURES



## PRESCRIPTION MAPS

Choose the most suitable vegetation index to draw up the prescription map and carry out a variable rate fertilization.



# FEATURES



## WORK



### TASK MANAGEMENT

Create and assign tasks to be done in the farms to your collaborator in real time.



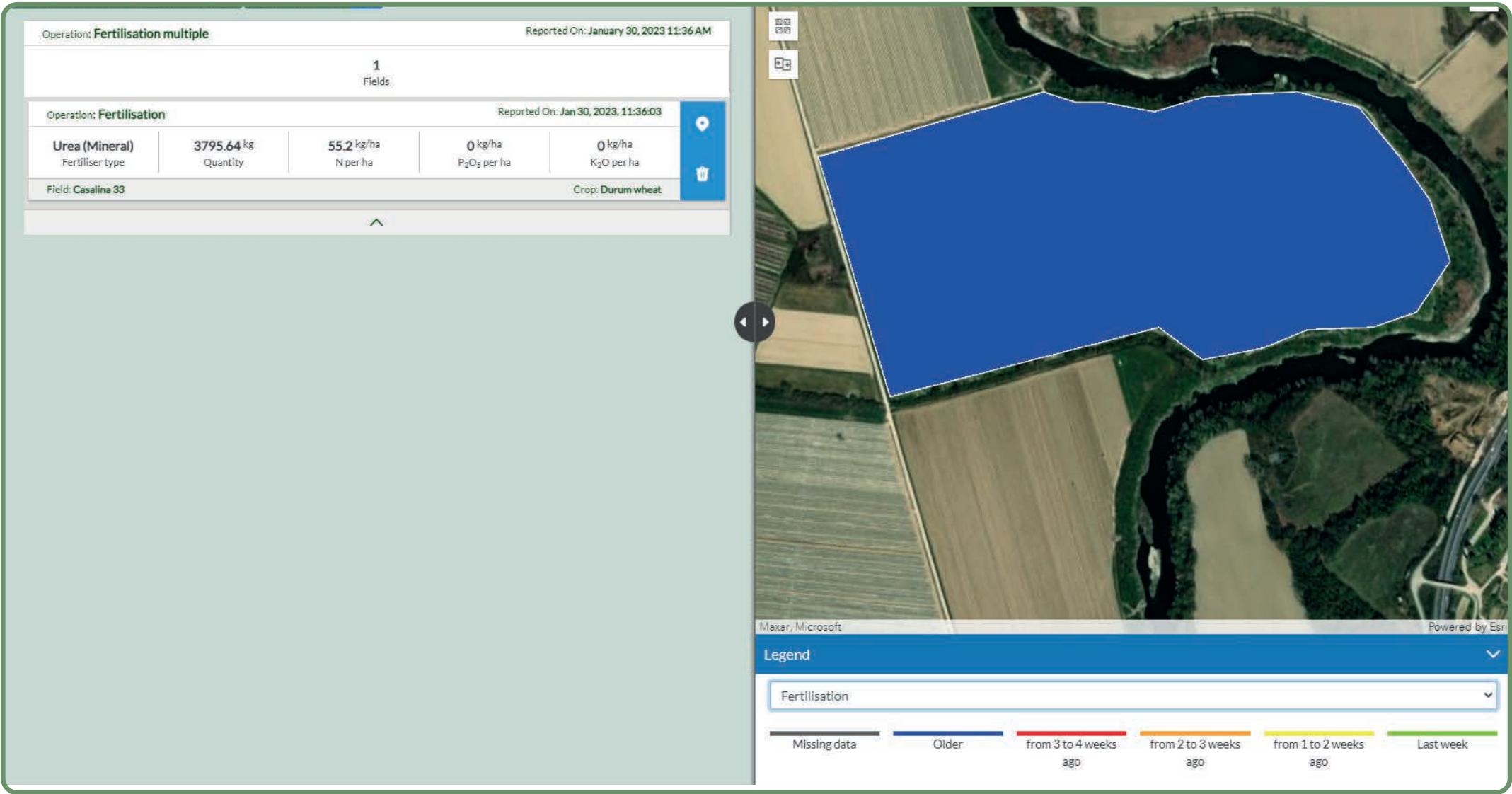
### MACHINERY

Register your agricultural machinery, any problems and maintenance carried out. You can also connect them to Agricolus by using Agrirouter.



### CROP OPERATIONS

Register where, how and when crop operations (treatments, fertilization, pruning, harvest) have been carried out. You can also access phytosanitary products database.





## CROP SCOUTING

Geolocate and register data from crop scouting by using the **mobile App** for phytosanitary monitoring and evaluation of crop development.



- ! ISSUES
- ! DAMAGES
- TRAPS
- CATCHES
- PHENOLOGY
- PESTS AND DISEASES
- SOIL ANALYSIS



# FEATURES



## WEATHER



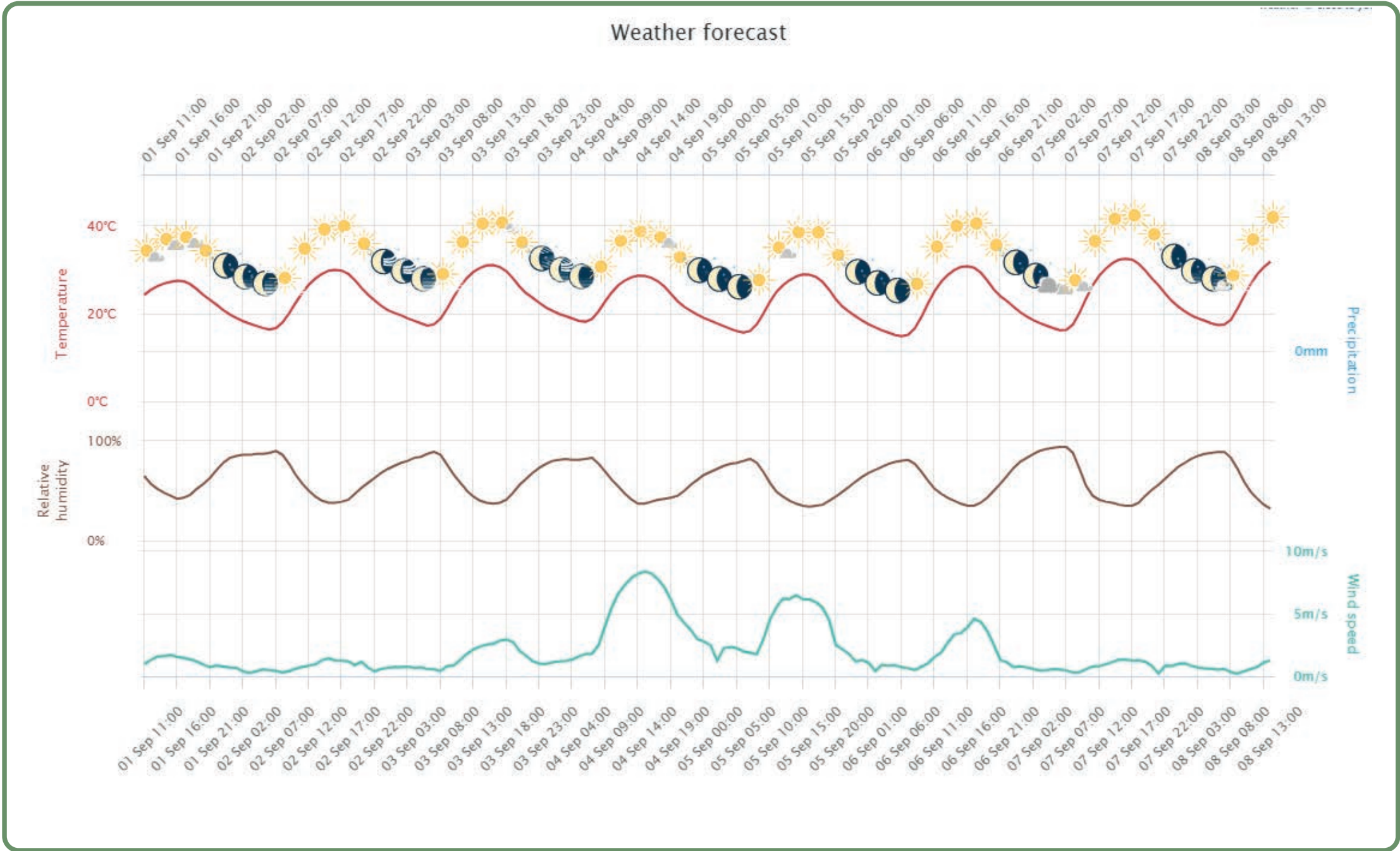
### WEATHER FORECASTS

Consult professional weather forecasts up to 7 days updated every hour: temperature, humidity, wind speed, rainfall.



### WEATHER STATIONS

Physical weather stations and sensors can be purchased or integrated, if already present in the company.



08 June 2023

Temperature : 22.39 °C

Temperature (Min-Max) : 14.8 / 30.6 °C

Precipitation : 0 mm

Cumulative precipitation (06 Jun 00:00–06 Jul 23:59) : 18.00 mm

Leaf wetness : 0 min

Relative humidity : 74.47 %

Relative humidity : 44.82 / 99.2 %

Wind speed : 0.74 m/s

Wind speed (Min – Max) : 0 / 2.9 m/s

# FEATURES



## DATA HISTORY

Consult your farm’s historical data and select a date from the past to analyze and compare accurate information on previous seasons.



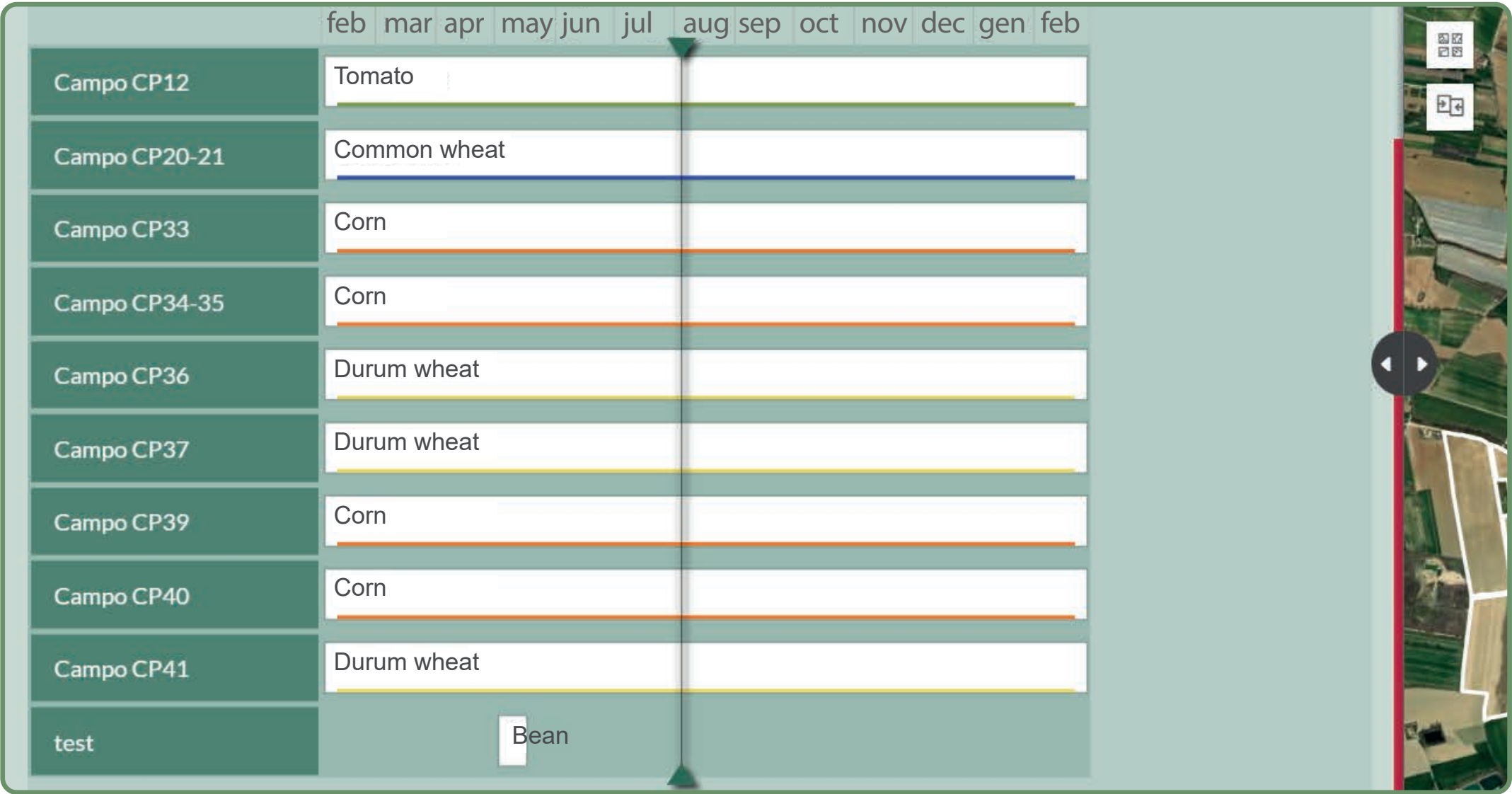
## CROP PLANNING

Register and quickly visualize your crop planning to better plan the following season.



## USER MANAGEMENT

Invite your collaborators into Agricolus to allow them to share and record data on your farm’s account.







[observa.agricolus.com](https://observa.agricolus.com)

---

Agricolus s.r.l.

Via Settevalli, 320 - 06129 Perugia  
VAT 06716550485

 Tel +39 075 997 5503    Fax +39 075 630 62111    [discover@agricolus.com](mailto:discover@agricolus.com)

**FIND OUT MORE**  <https://www.agricolus.com/en/>