

AGRICOLUS[®]

PLUS

THE PROFESSIONAL SOLUTION FOR FARMS

PRESCRIPTION
MAPS



CROP
SCOUTING



SATELLITE
MONITORING



FORECAST
MODELS



ADVANTAGES



Carry out operations at the right time according to the real crop needs



Reduce management costs and the use of resources



Prevent and monitor climate and pest adversities of crops



Manage efficiently crop operations



FIELD MAPPING

Geolocate the field on the map and draw it. Features will be immediately hooked. You can enable the cadastral map and enter sheet and parcel information.

Use one of the following methods to create your field.



Draw on map

Locate the plot on the map and draw it manually.

✓ Select



Automatic detection

Locate the plot on the map and enable automatic detection to map the field with just one click.

✓ Select



Upload files

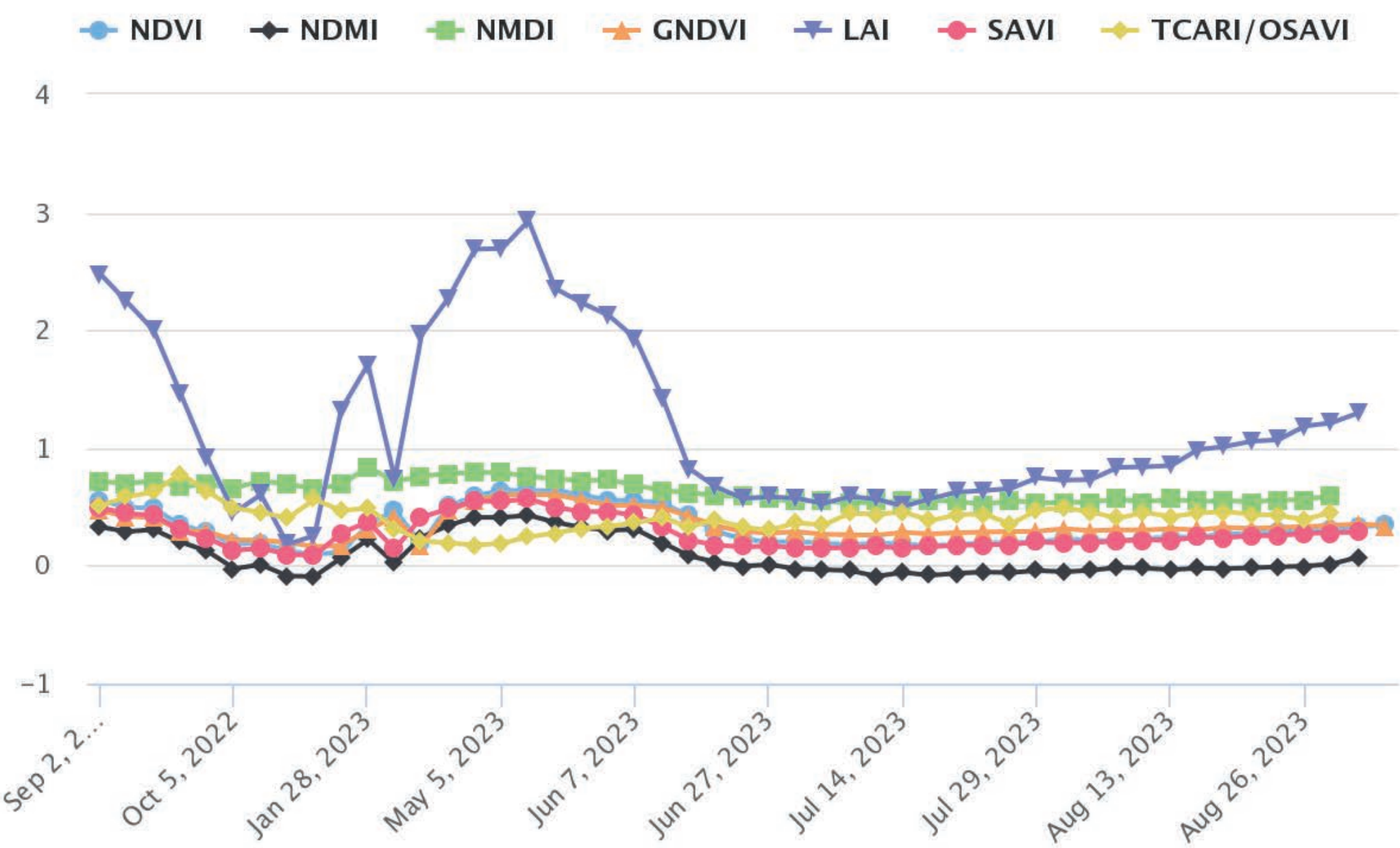
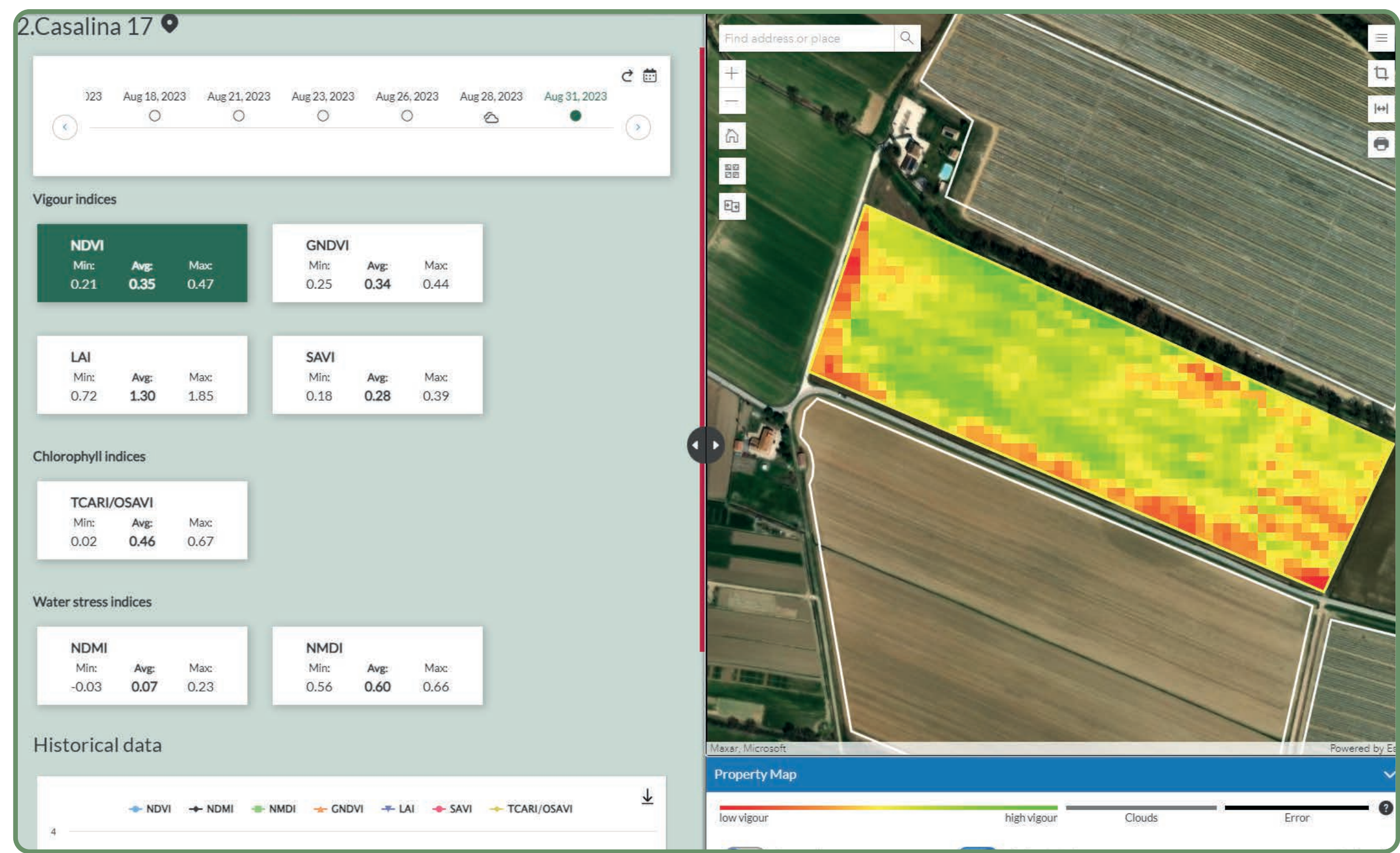
Upload a .shp or .kmz file.

✓ Select

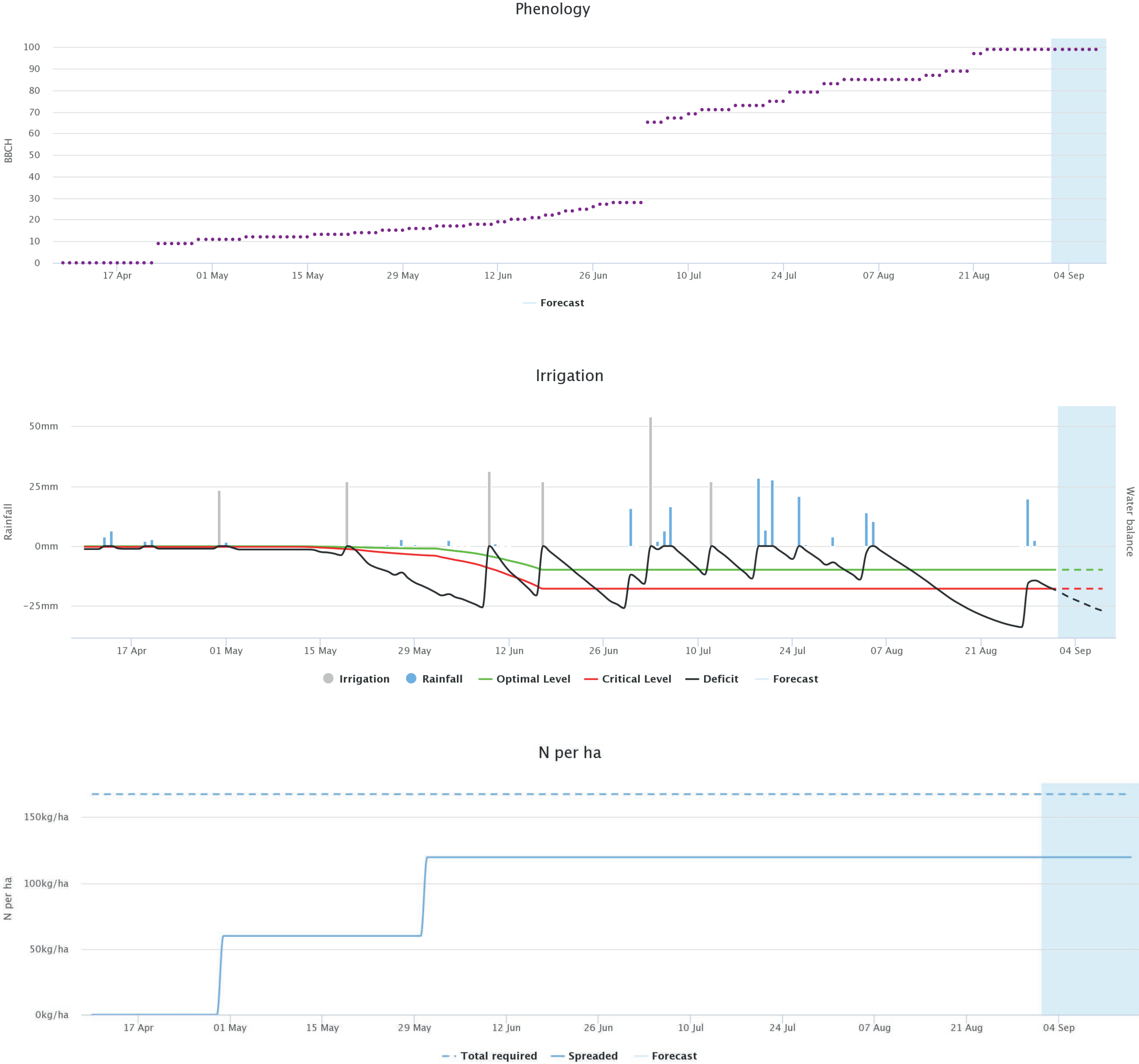


SATELLITE IMAGERY

Consult Sentinel-2 satellite images with vigor, water stress and chlorophyll indices to assess the health of the crop and plan monitoring activities.



FEATURES



FORECAST MODELS

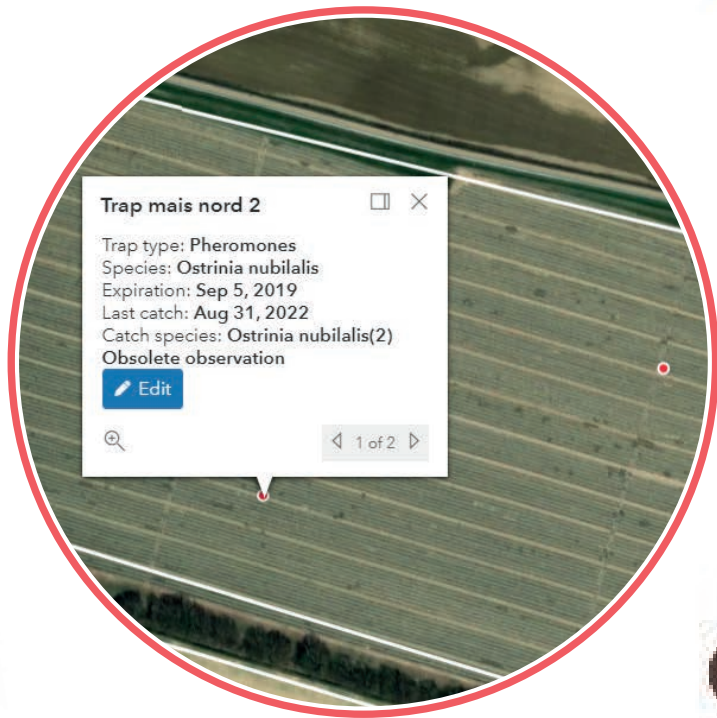
Monitor forecast models for phenology, irrigation and fertilization available for all crops and analyze DSS' data.

FEATURES



DECISION SUPPORT

Suggest operations to be carried out based on collected data.



next 12 hours forecasting



12-HOUR FORECAST



ESTIMATE OF IRRIGATION REQUIREMENTS FROM FORECAST MODEL



FIELD ACTIVITIES ENTERED BY THE USER AND INTEGRATED INTO THE PHENOLOGY FORECAST MODEL



- 👁️ ripening (BBCH 83)
- 📅 Flowering (BBCH 65)



STAGE OF DEVELOPMENT OF THE CROP CALCULATED BY THE PHENOLOGY FORECASTING MODEL



SUSTAINABILITY

Monitor the **economic** (yield, production) and **environmental sustainability indicators** of your farm. You can set the level to be reached for each indicator and monitor how the work is going.

Economic

Environmental

Targets List

ENVIRONMENTAL INDICATORS

ENVIRONMENTAL ?

Environmental indicators focus on the impact of agricultural practices on the surrounding environment

Water

Indicator	Value	Target	Status	
Total water consumption	20899.38 m ³	Less than 459781.50m ³		▼
Average water consumption	7404.53 m ³ /ha	Less than 7500.00m ³ /ha		▼
Water use efficiency	0 m ³ /t			

Targets list

Crop

Indicator

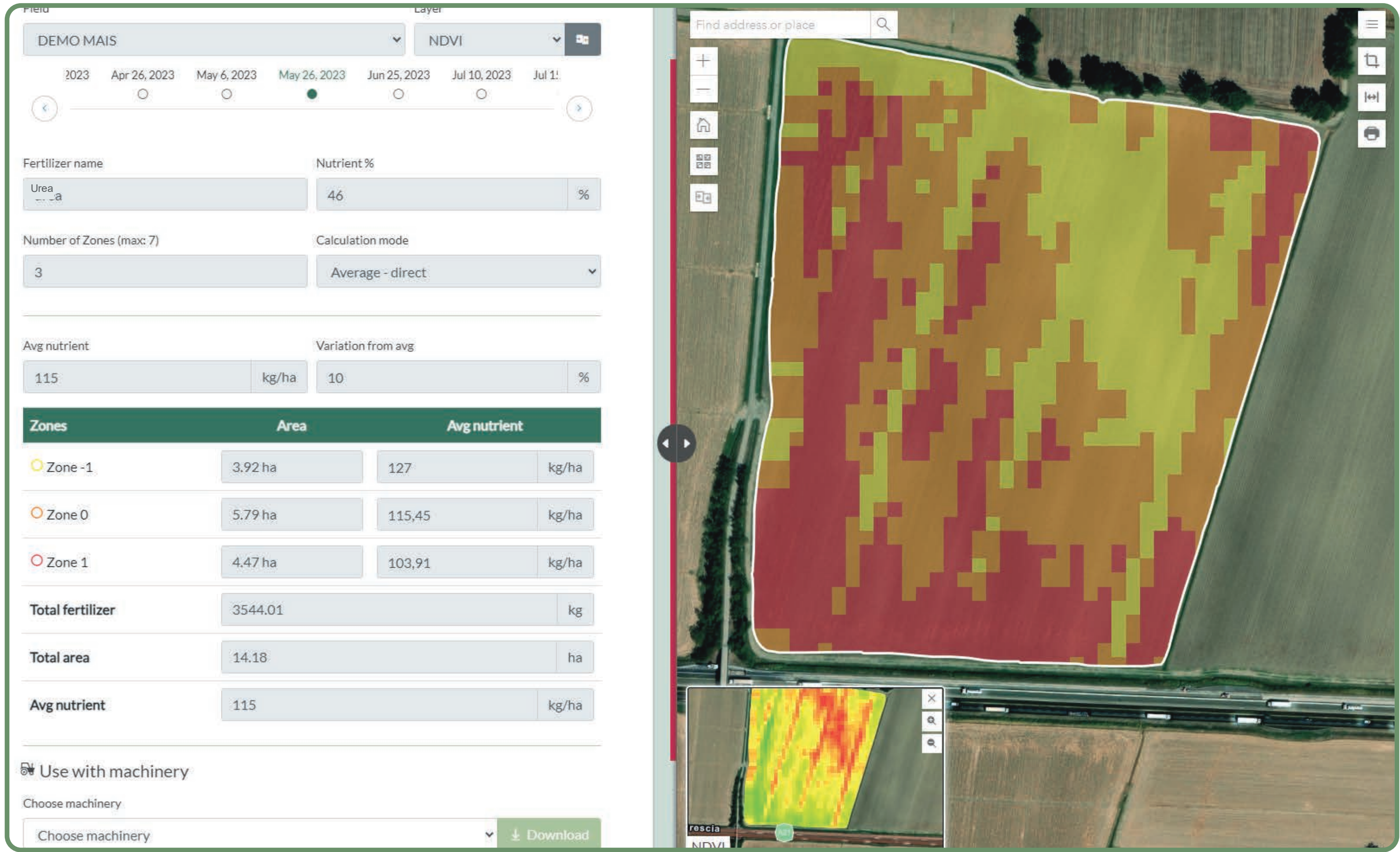
Score

No crop selected

No indicator selected

Crop	Indicator	Target
Corn	Average water consumption	Less than 7500 m ³ /ha
Corn	phosphorus use efficiency (P)	Less than 55 kg/t
Grape	Average water consumption	Less than 3500 m ³ /ha
Common wheat	N. of treatments per field	Less than 1 n
Corn	phosphorus use efficiency (P)	Less than 5 kg/t
Corn	nitrogen use efficiency (N)	Less than 10 kg/t

FEATURES



PRESCRIPTION MAPS

Choose the most suitable vegetation index to draw up the prescription map and carry out a variable rate fertilization.

FEATURES



WORK



TASK MANAGEMENT

Create and assign tasks to be done in the farms to your collaborator in real time.



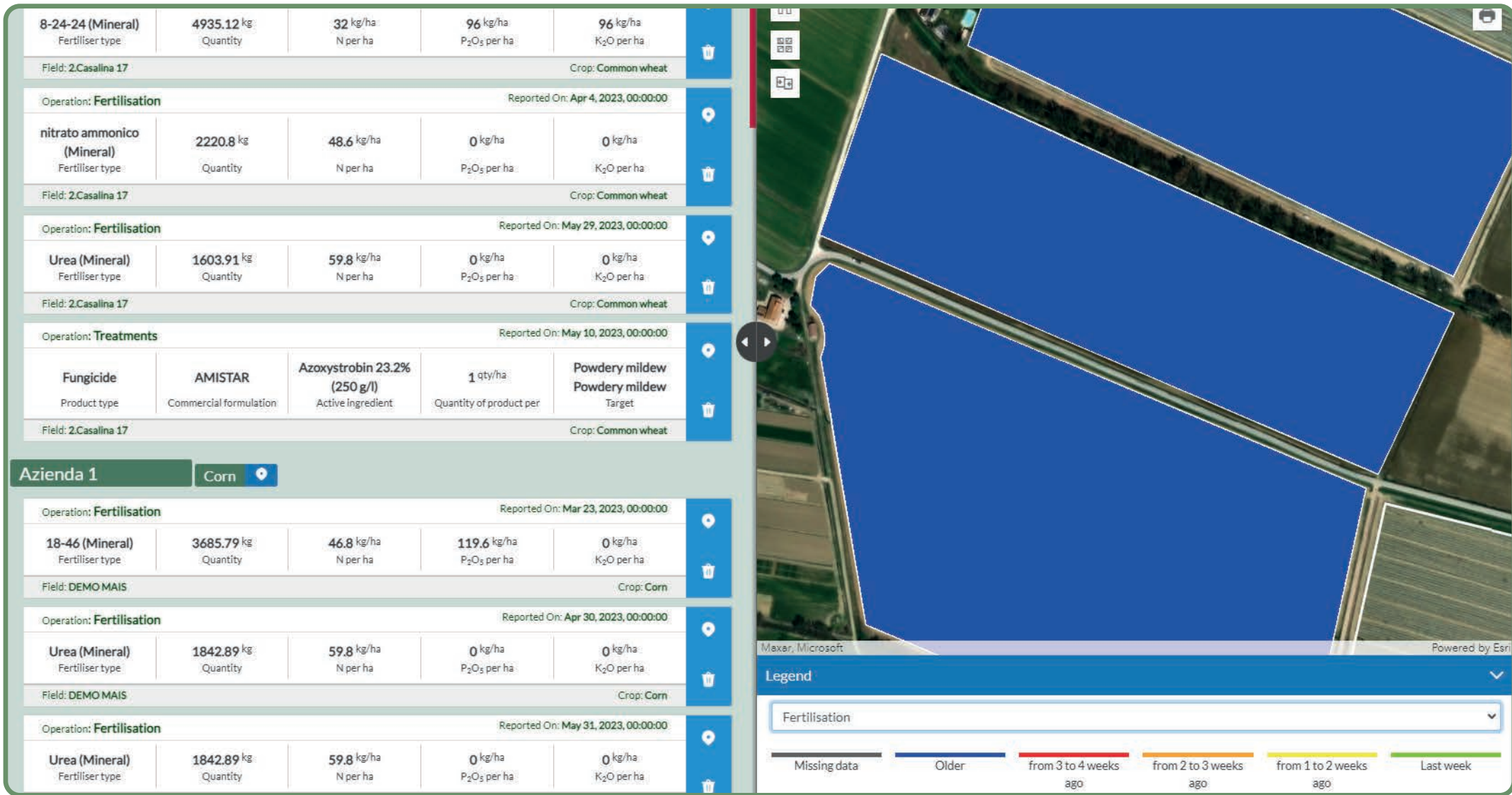
CROP OPERATIONS

Register where, how and when crop operations (treatments, fertilization, pruning, harvest) have been carried out. You can also access phytosanitary products database.



MACHINERY

Register your agricultural machinery, any problems and maintenance carried out. You can also connect them to Agricolus by using Agrirouter.



Lot code: 001a1



The QR code on the mask will allow easy access to the web page dedicated to the product traceability. In this way, all detailed product information can be consulted with great convenience

Landing page

<https://web.agricolus.co>



[Visit page](#)



PRODUCTION LOTS

Create and assign to each crop its own production lot to improve **traceability** of operations. A **QR code** is also generated that allows you to access and share the dedicated web page where you can consult all the information on the product.

FEATURES



CROP SCOUTING

Geolocate and register data from crop scouting by using the **mobile App** for phytosanitary monitoring and evaluation of crop development.



ISSUES



DAMAGES



TRAPS



CATCHES



PHENOLOGY



PESTS AND DISEASES



SOIL ANALYSIS

FEATURES



WEATHER



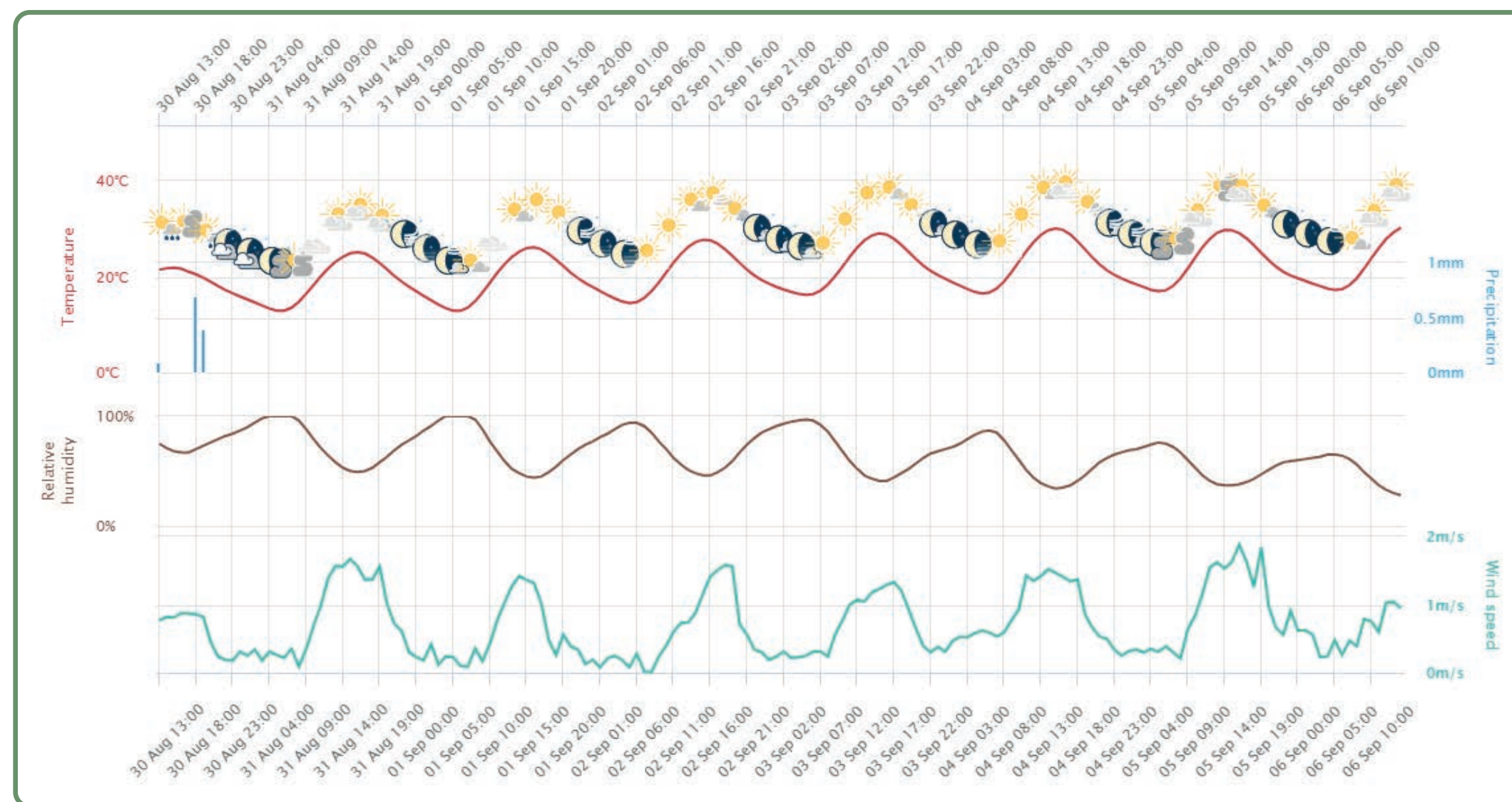
WEATHER FORECASTS

Consult professional weather forecasts up to 7 days updated every hour: temperature, humidity, wind speed, rainfall.



WEATHER STATIONS

Virtual weather station included; physical weather stations and sensors can be purchased or integrated, if already present in the company.



30 Aug 09:00

Temperature : 18.24 °C

Temperature (Min-Max) : 16.72 / 20 °C

Precipitation : 0 mm

Cumulative precipitation (30 Aug 00:00–30 Aug 23:59) : 0.60 mm

Leaf wetness : 60 min

Relative humidity : 89.81 %

Relative humidity : 81.04 / 96.3 %

Wind speed : 0.3 m/s

Wind speed (Min – Max) : 0.3 / 0.8 m/s

FEATURES



DATA HISTORY

Consult your farm's historical data and select a date from the past to analyze and compare accurate information on previous seasons.



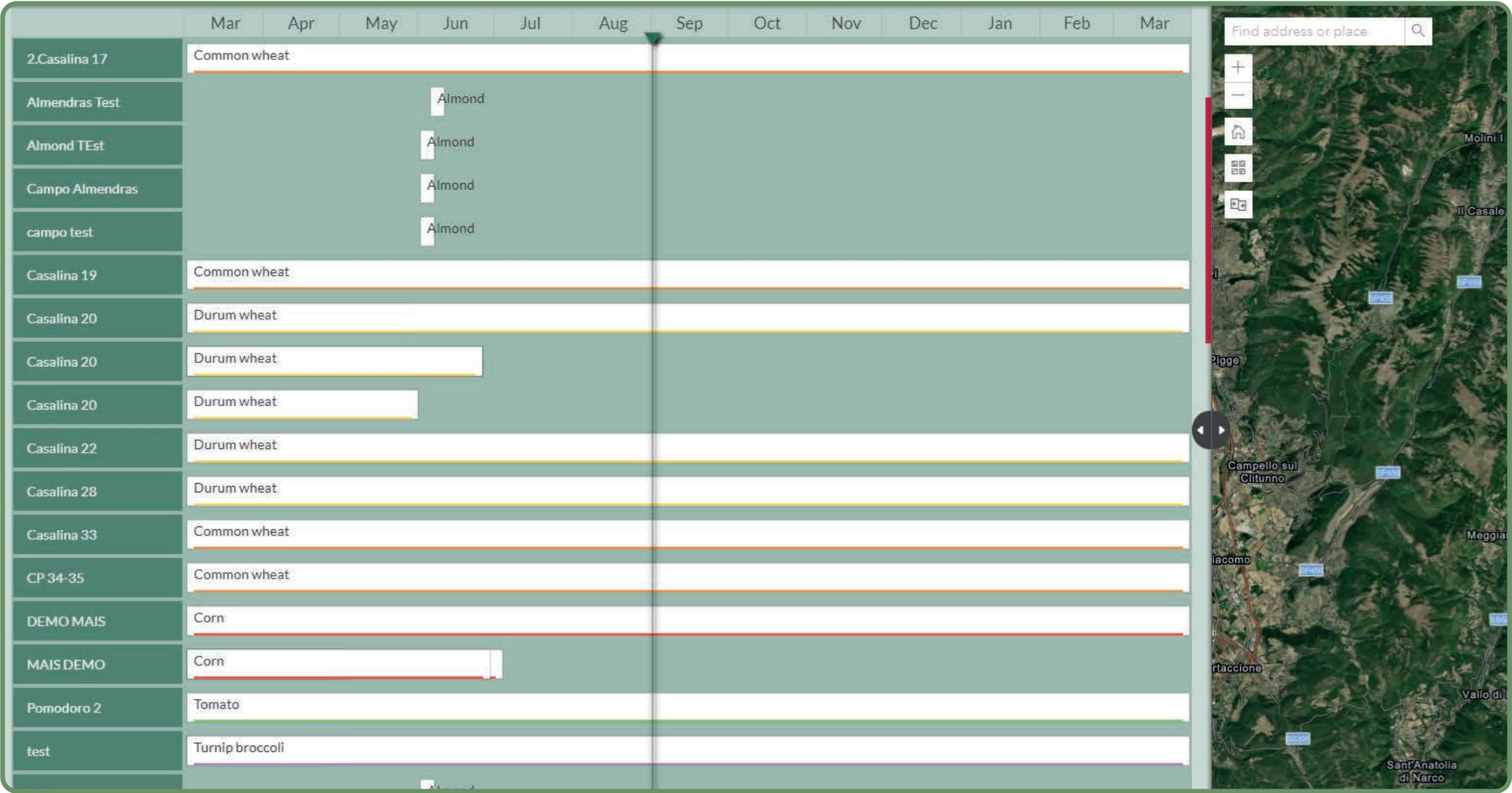
USER MANAGEMENT

Invite your collaborators into Agricolus to allow them to share and record data on your farm's account.



CROP PLANNING

Register and consult easily your crop planning to plan the next season efficiently.



ADDITIONAL MODULES AND SERVICES



HISTORICAL SATELLITE IMAGES

Processing of satellite images dating back to past years.



AGROWEATHER STATIONS AND TRAPS

Purchase or rental of agro-meteorological stations and automatic traps within the platform.




SPECIFIC FEATURES

For olive, grape, tobacco, corn, winter cereals, tomato.



Agricolus s.r.l.

Via Settevalli, 320 - 06129 Perugia
VAT 06716550485

 Tel +39 075 997 5503

 Fax +39 075 630 6211

 discover@agricolus.com

FIND OUT MORE  <https://www.agricolus.com/en/>