

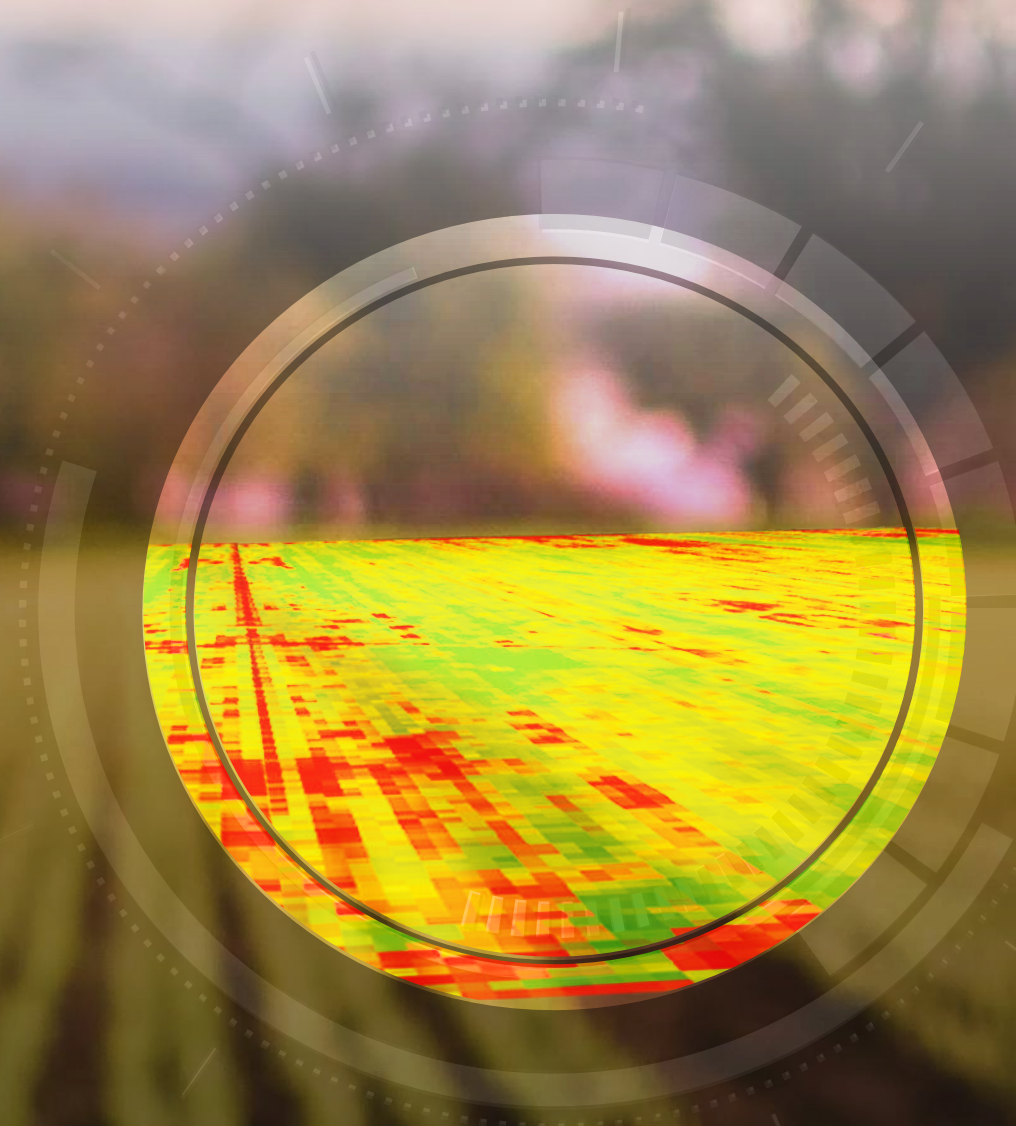
AGRICOLLUS[®]

EASY

CROP MONITORING FOR SMALL FARMS



CROP
SCOUTING



SATELLITE
MONITORING

ADVANTAGES



Vigor index to assess crops
development and health



Register of all crop operations to
analyze the work done



Data collection with mobile app to
simplify field activities



FIELD MAPPING

Geolocate the field on the map and draw it. Features will be immediately hooked. You can enable the cadastral map and enter sheet and parcel information.

Use one of the following methods to create your field.



Draw on map

Locate the plot on the map and draw it manually.

✓ Select



Automatic detection

Locate the plot on the map and enable automatic detection to map the field with just one click.

✓ Select



Upload files

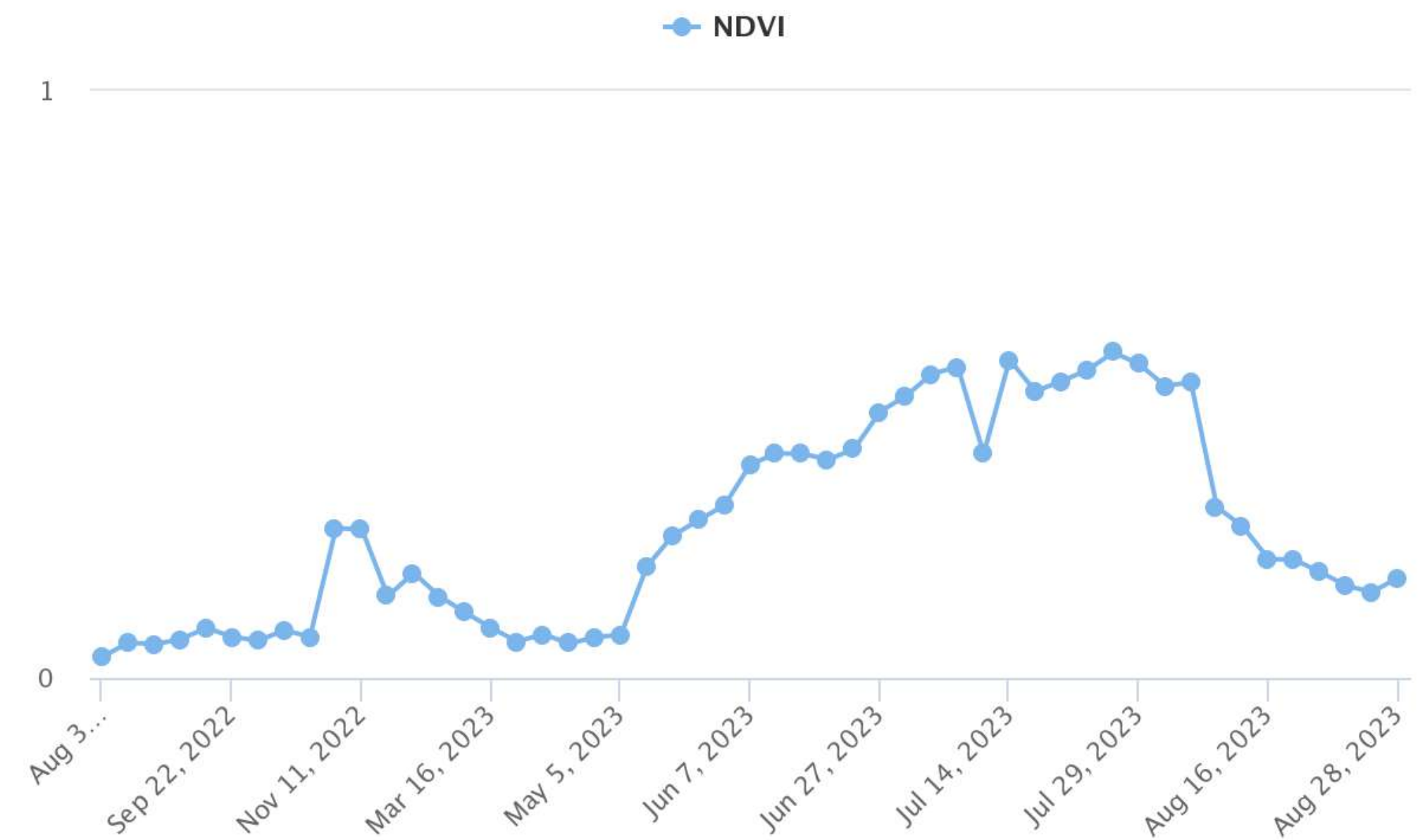
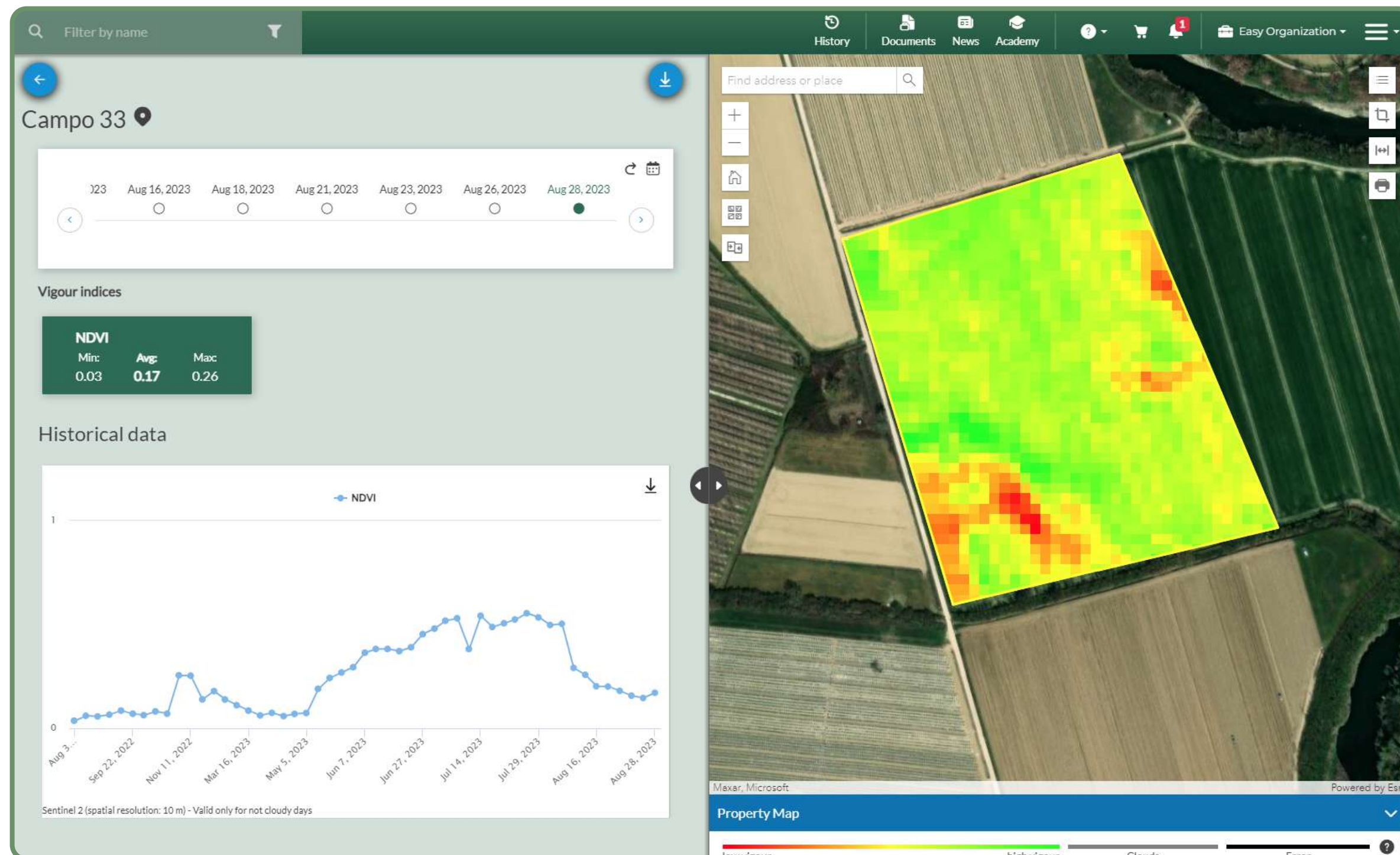
Upload a .shp or .kmz file.

✓ Select



SATELLITE IMAGERY

Consult Sentinel-2 satellite images with vigor, water stress and chlorophyll indices to assess the health of the crop and plan monitoring activities.





CROP SCOUTING

Geolocate and register data from crop scouting by using the **mobile App** for phytosanitary monitoring and evaluation of crop development.



- ⓘ ISSUES
- ⚠ DAMAGES
- 🐛 PESTS AND DISEASES
- 🧪 SOIL ANALYSIS

FEATURES



WORK



TASK MANAGEMENT

Create and assign tasks to be done in the farms to your collaborator in real time.



CROP OPERATIONS

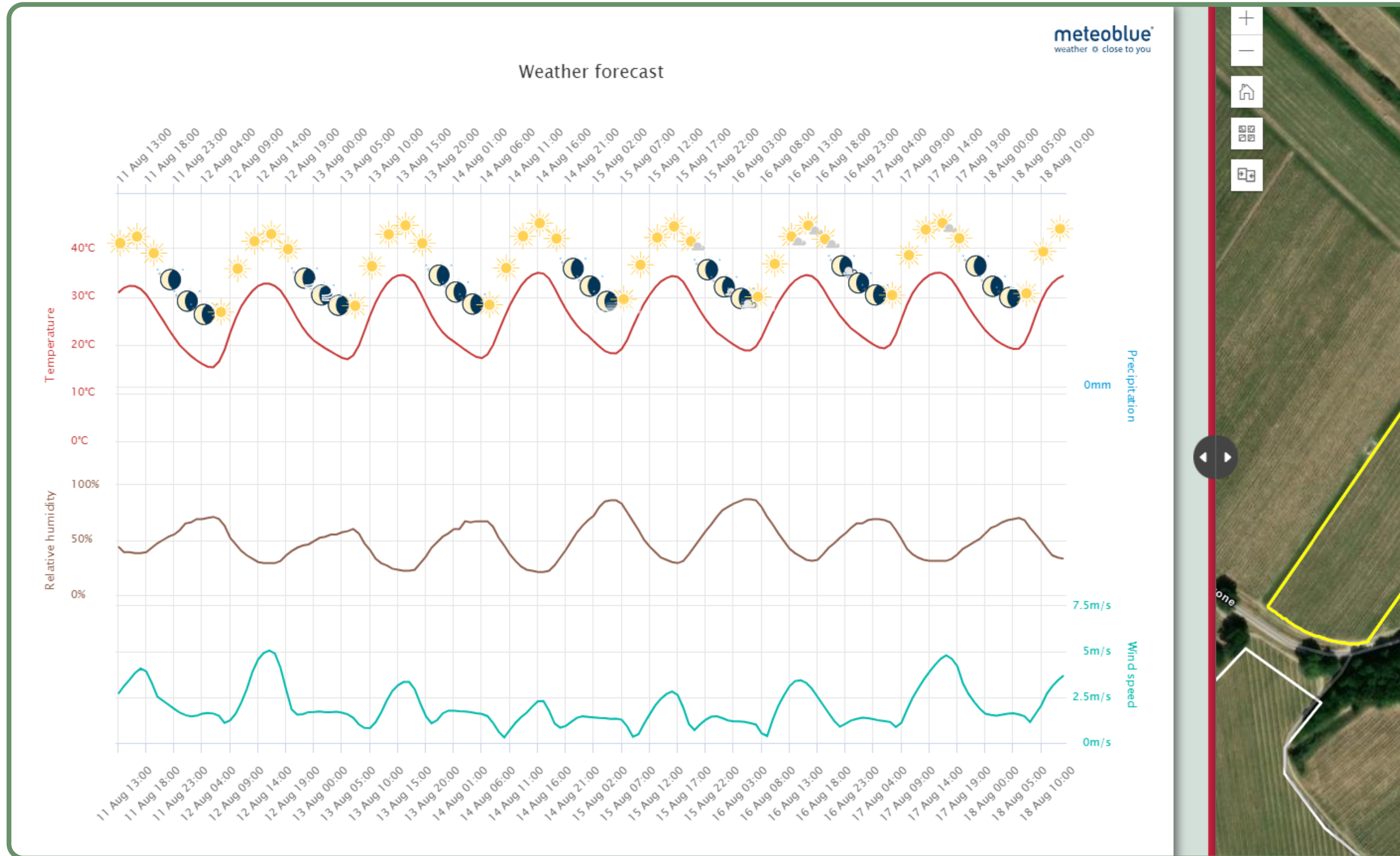
Register where, how and when crop operations (treatments, fertilization, pruning, harvest) have been carried out. You can also access phytosanitary products database.

The screenshot displays the Agricolus software interface. On the left, a list of operations is shown for the field 'Olivo valle' (Crop: Olive). The operations include:

- Canopy management** (Winter pruning): Reported On: Feb 13, 2019, 00:00:00.
- Fertilisation** (Urea (Mineral)): Reported On: Feb 4, 2019, 00:00:00. Fertiliser type: 254 kg Quantity. N per ha: 41.4 kg/ha. P₂O₅ per ha: 0 kg/ha. K₂O per ha: 0 kg/ha.
- Harvesting** (Total harvesting): Reported On: Nov 3, 2019, 00:00:00. Yield quantity (t): 28.22. Yield quantity (t/ha): 10.
- Harvesting** (Total harvesting): Reported On: Sep 14, 2021, 16:05:10. Yield quantity (t): 12. Yield quantity (t/ha): 4.25.
- Soil management** (Cultivation): Reported On: Apr 9, 2019, 00:00:00.
- Soil management** (Cultivation): Reported On: Sep 18, 2019, 00:00:00.

On the right, a satellite map shows the field boundary highlighted in blue. A legend at the bottom right indicates the color coding for fertilisation operations: Missing data (grey), Older (blue), from 3 to 4 weeks ago (red), from 2 to 3 weeks ago (orange), from 1 to 2 weeks ago (yellow), and Last week (green).

FEATURES



WEATHER FORECASTS

Consult professional weather forecasts up to 7 days updated every hour: temperature, humidity, wind speed, rainfall.



DATA HISTORY

Consult your farm's historical data and select a date from the past to analyze and compare accurate information on previous seasons.



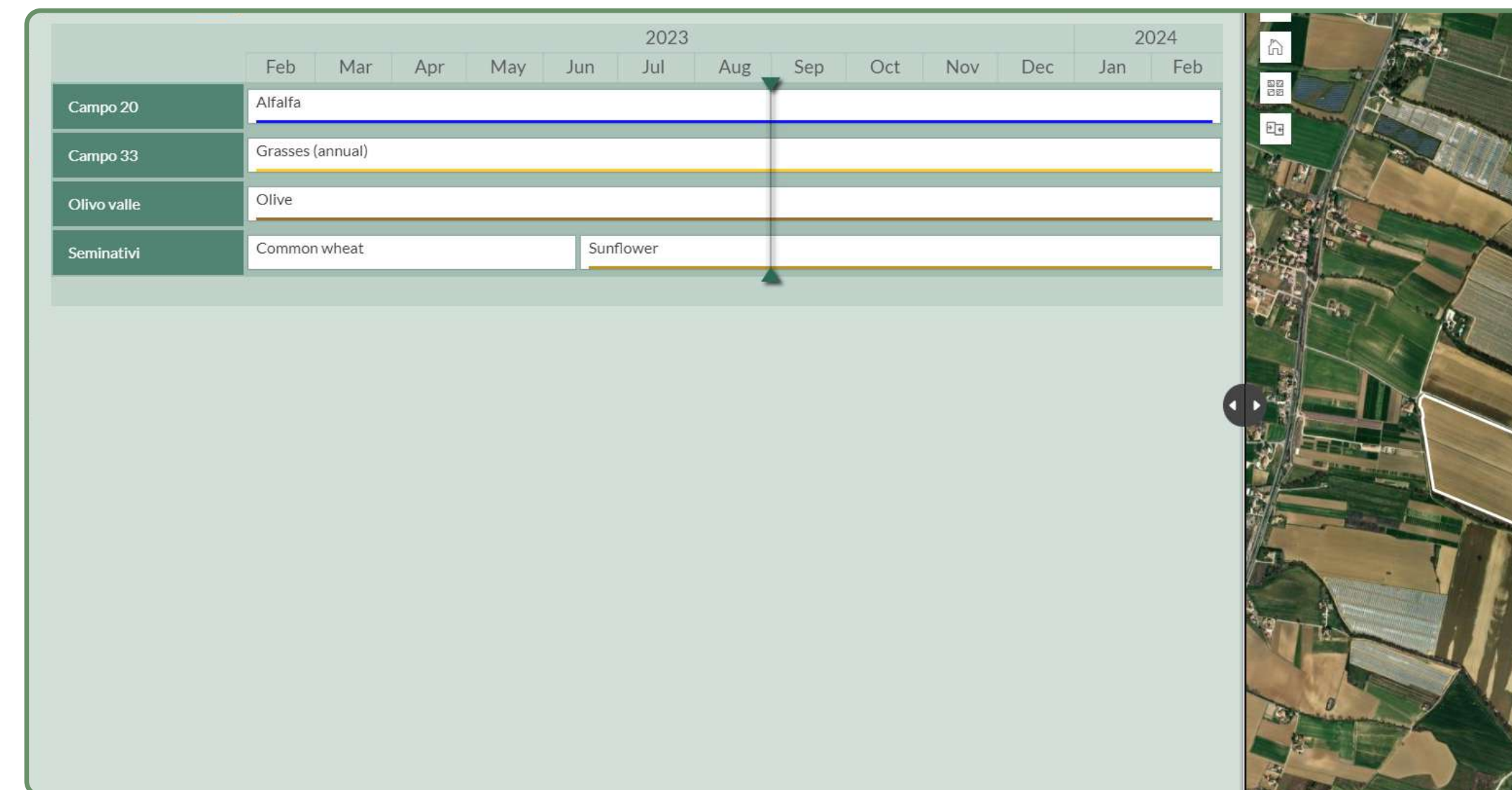
USER MANAGEMENT

Invite your collaborators into Agricolus to allow them to share and record data on your farm's account.



CROP PLANNING

Register and quickly visualize your crop planning to better plan the following season.






Agricolus s.r.l.

Via Settevalli, 320 - 06129 Perugia
VAT 06716550485

 Tel +39 075 997 5503

 Fax +39 075 630 62111

 discover@agricolus.com

FIND OUT MORE  <https://www.agricolus.com/en/>